

Construction

HIGHLIGHTS

\$67,800

Median earnings per job within occupations that span the construction sector between Jan 2023 - Dec 2023.

\$32.62/Hr

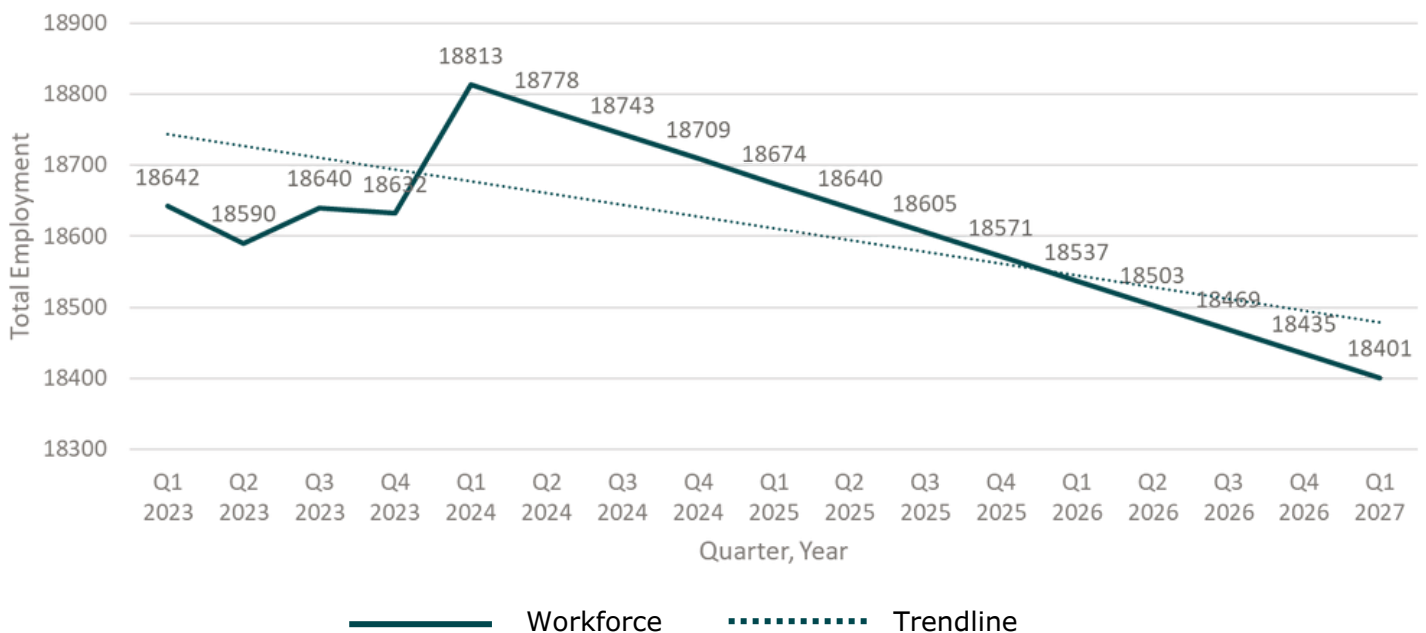
Median advertised hourly wage for construction jobs in Sonoma County between January 2023 - December 2023,

\$2.5 Billion

Total Gross Regional Product (GRP) in 2023, representing **7.4%** of the county's total economic output.

Employment Forecast, Sonoma County

Construction Sector, (Q1 2023 - Q1 2027)



Projected Employment

- A subtle yet steady decline in payroll is anticipated for Sonoma County's construction industry over the next two years, decreasing from **18,743 jobs** in **Q3 2024** to **18,401 jobs** by **Q1 2027**.

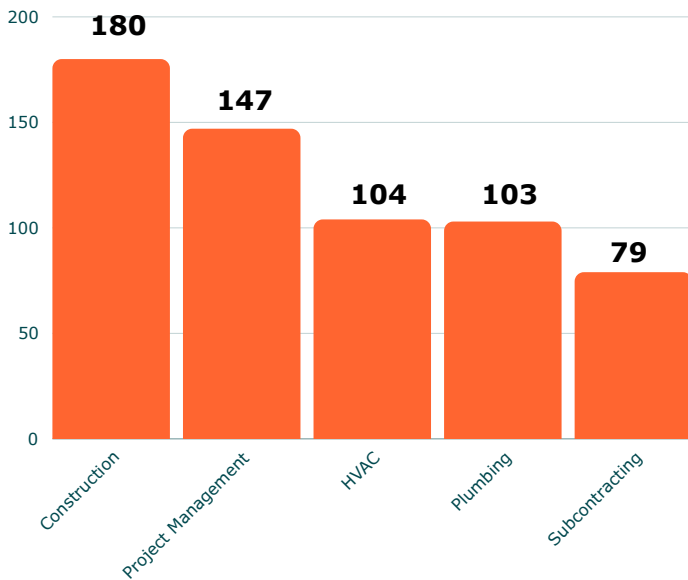
Posting Data

- Between January to December 2023, **49%** of unique job postings listed **no required experience**. **12%** listed **0-1 years**, and **26%** included **2-3 years**. These metrics are anticipated to remain consistent over the next several quarters.

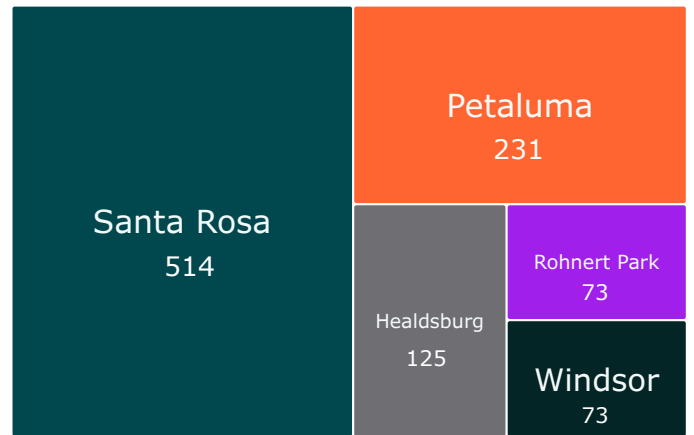
Top Job Postings



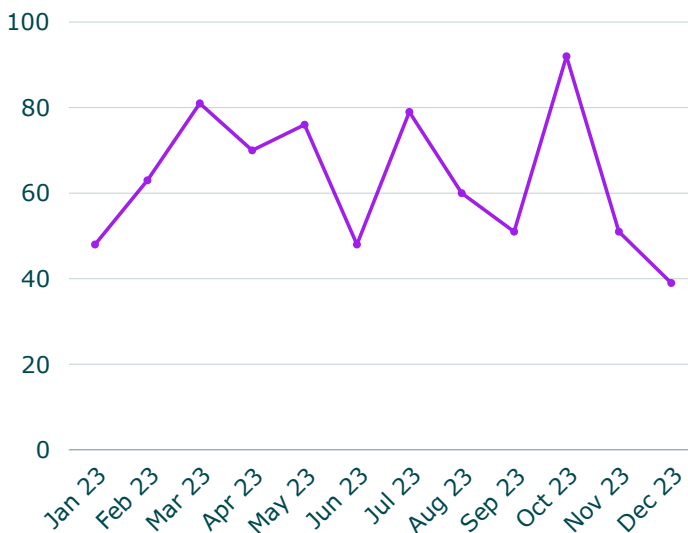
Top In-Demand Skills



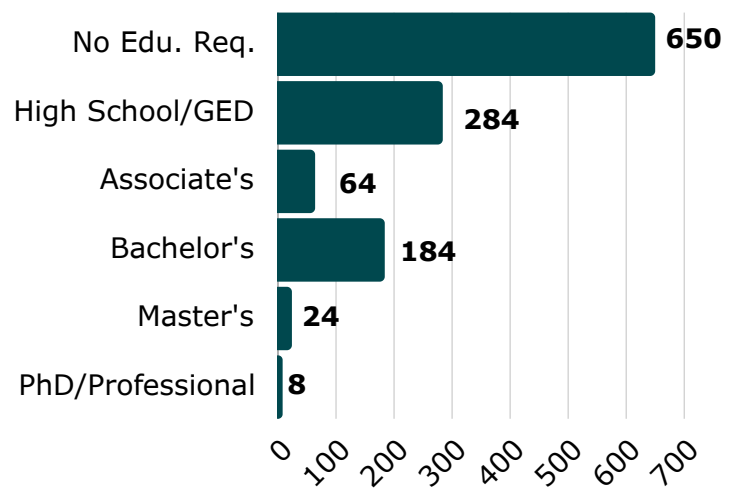
Top 5 Cities Posting



Unique Monthly Job Postings



Education Requirement by Job Posting



BOARD OF DIRECTORS

1,098

Total Unique Postings

299

Competing Employers

29

Median Posting Duration

Top Companies Hiring

Montage International (100)

City of Santa Rosa (78)

Sunrun (72)

Ongaro And Sons (35)

Marin H2O (24)

Leaffilter North (24)

Victor (23)

Top Soft Skills

Communication (532)

Customer Service (388)

Detail Oriented (280)

Management (260)

Operations (230)

Lifting Ability (205)

Sales (174)

Top Technical Qualifications

Valid Driver's License (337)

Cardiopulmonary Resuscitation (CPR) Certificate (39)

First Aid Certification (36)

CDL Class C License (14)

10-Hour OSHA General Industry Card (12)

Professional Engineer (PE) License (10)

Journeyman Electrician (8)

BOARD OF DIRECTORS

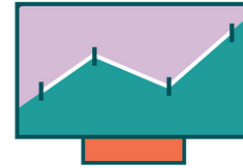
Ethan Brown, Executive Director
Kathryn Philip, Chair
Skip Brand
Betzy Chávez

Linda Kachiu
Jordan Kivelstadt
Wayne Leach
Regina Mahiri

Richard Marzo
Nick Schwanz

Annual Impact Analysis

Measuring the estimated economic output of a construction project in Sonoma County when the number of employees is 100.



	Direct	Indirect	Induced	Total
Employment	100	12	33	145
Sales/Output	\$31.6 Million	\$4.4 Million	\$9.8 Million	\$45.8 Million
Compensation	\$10.8 Million	\$1.2 Million	\$2.9 Million	\$14.9 Million

SUMMARY

This analysis examines the estimated annual fiscal impact of construction activities in Sonoma County, California, represented by a project size of 100. Key metrics of focus include sales/output, employment, and compensation, which collectively highlight the construction sector's significant contributions to the local economy. By including direct (immediate revenue generated), indirect (economic activity generated from within the supply chain), and induced impacts (revenue in the local economy spurred by the spending of those employed), this analysis reflects the direct and indirect benefits of a construction project of this size, emphasizing its broader fiscal implications for employment and local economic activity in Sonoma County.

METHODOLOGY & SOURCES

This report provides a snapshot of the job market for Sonoma County's construction industry between January and December, 2023. Data from unique job postings is collected by JobsEQ+ and Lightcast Analytics, including: top employers, occupational groups, job postings, median annual salaries, largest employers, economic impact analyses, and top skills and certifications. Lightcast and JobsEQ+ are unable to access any non-publicly posted jobs, so data may not reflect the hiring demands of all Sonoma County employers.

Interested readers are encouraged to contact data resource agencies for further research or to visit www.sonomaedc.org for more information. Please direct all inquiries or suggestions for future reports to the EDC by calling (707) 565-7170 or emailing edc@sonoma-county.org.

FOUNDATION SPONSORS

Presenting Level



Premiere Level



Executive Level

Morgan Stanley
Pisenti & Brinker LLP
North Bay Association of REALTORS



sonomaedc.org
(707) 565-7170
edc@sonoma-county.org

BOARD OF DIRECTORS

Ethan Brown, Executive Director
Kathryn Philip, Chair
Skip Brand
Betzy Chávez

Linda Kachiu
Jordan Kivelstadt
Wayne Leach
Regina Mahiri

Richard Marzo
Nick Schwanz